

IVAGA TOURS

GALÁPAGOS ISLAND



info@ivagatoursbanios.com



+593984009963



GALAPAGOS ISLAND HOPPING 4D

3N

DAY 1 BALTRA / SANTA CRUZ ISLAND / ISABELA ISLAND

You take a flight from Quito to the Airport of Baltra Island.

Our guides will take you over to Isabela Island.

Flamingo Lagoon: which is the largest coastal lagoon found in the Galapagos and is one of the main reproductive sites for the grand majority of flamingos. Dinner and accommodation.

Highlights: Flamingos, svelte birds.

Activities: Hiking, walking

Type of Landing: Dry landing

Difficulty: Moderate



DAY 2 ISABELA ISLAND

- After breakfast our destination is the rim of Sierra Negra Volcano.
- The Sierra Negra Volcano boasts the largest basaltic caldera in Galapagos at 9 x 10 km. The site offers impressive views and the opportunity to observe up to 7 species of finch and a rich display of vegetation. The north side of the caldera provides evidence of its most recent volcanic activity in 2005.

Highlights: Basaltic caldera, stunning views, finches / **Activities:** Hiking, horseback riding, walking

Type of Landing: Dry landing

Difficulty: Moderate



CONCHA PERLA

- This is the perfect spot for those who love swimming or snorkeling! Concha de Perla is a shallow, calm bay with crystal clear water that allows you to enjoy the fascinating marine life of Galapagos. If you are lucky you will be able to swim with sea lions and penguins. Dinner and accommodation.

Highlights: Sea lions and penguins. /

Activities: Snorkeling

Type of Landing: Dry landing /

Difficulty: Moderate

DIA 3 ISLA SANTA CRUZ (después desayuno Navegación a Santa Cruz)

Charles Darwin Station

- The Charles Darwin Research Station is home to turtles ranging from 3-inches (new hatchlings) to 4-feet long. Subspecies of turtles interact with one another and many of the older turtles are accustomed to humans, stretching out their heads for a pet. The babies are kept until they are about four years old and strong enough to survive on their own.

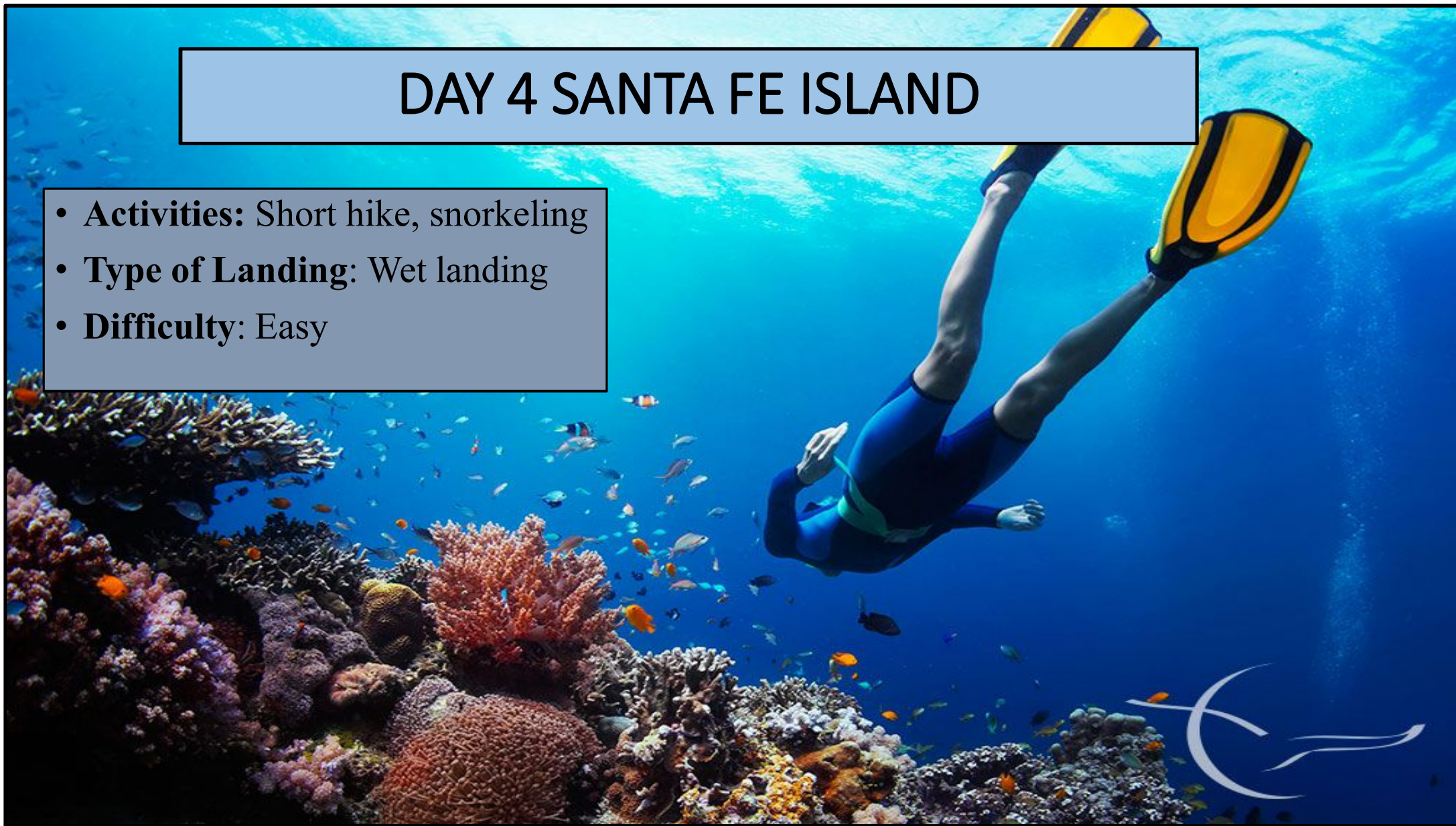
TORTUGA BAY

is another destinations to visit on your own on Santa Cruz with baby powder white sand, magic blue waters, marine iguanas, and sometimes flamingos. It is only 2.5 Km from Puerto Ayora on a nice brick path (about 30-45 minutes walking).



DAY 4 SANTA FE ISLAND

- **Activities:** Short hike, snorkeling
- **Type of Landing:** Wet landing
- **Difficulty:** Easy



DAY 5 SANTA CRUZ ISLAND

RANCHO PRIMICIA

- Is another giant tortoise reserve on private property in the Galapagos. The ranch is located against national park lands. The tortoises migrate here in search of cooler shaded area, water holes, and places to lay their eggs. Here you will have the opportunity to get up close to these incredible reptiles. Primicia is an excellent opportunity take some amazing photos of these gentle giants.
- There are Lava Tunnels at El Mirador (3 km from Pto. Ayora) where you can go into the earth at one place and come out 30 minutes later at another place. Intact stands of vegetation zones, including dense scalesia forest and miconia, are some of the homes of unique Galapagos wildlife. The archipelago's most accessible population of giant tortoises can be found in this region of the Highlands. There are some of some 85 species of birds here, including nine Darwin's finches, rarities such as Galapagos rails, breeding dar-rumped petrels, and many other vagrant species. Dinner and accommodation.



Alemanes beach

- Beach of the Alemanes is one of the most famous beaches of Santa Cruz Island for its crystalline waters. It is a small, quiet place to enjoy swimming and diving oxygen, especially at high tide.
- Beach of the Alemanes have a very different landscape, vegetation and animal life. Find on its shores and green mangroves, salt-tolerant plants. The arid zone just inside the forest, dominated by palo santo trees and cactus.
- In the vicinity of the beach you can enjoy the spectacle of marine iguanas.



“

Las “Grietas”

- A visit to “Las Grietas” on Santa Cruz Island. Directly translated, “grieta” means crevasse or crack. Las Grietas is a place to swim in cool ocean water between two tall cliffs, where the earth has opened like a “crack” or “crevasse”.
- Las grietas has small openings for water to filter through, the view is spectacular: like swimming in a secret cove, in a Jurassic Park scene, or Never Never land!

Actividades: Caminar, observación de aves, snorkeling.

Tipo de aterrizaje: Desembarco seco

Dificultad: moderada (larga)



DIA 6 ISLA SANTA CRUZ

- Los Gemelos, or the Twin Craters, are located opposite each other on both sides of the road leading from Puerto Ayora to Baltra. The name is only figurative; not real craters, these formations were created by the collapse of surface material in underground fissures and chambers. The view is breathtaking.

Transfer to the Baltra Airport



- NOTE: This itinerary is subject to change without notice due to seasonal changes, inclement weather conditions, and adjustments of Galapagos National Park policy.

- INCLUDED: transfers, tours, Complete Meals, Accommodation (private bathrooms – air conditioner – hot shower), Bilingual naturalist guide (Spanish-English); Transportation.

- NOT INCLUDED: Air fare Quito-Galapagos-Quito, Entrance fee 100.00 usd; Ingala immigration control card 20.00 usd, Fee port on Isabela Island \$ 5 per person;; tips. Taxi boat \$3, Snorkel equipment (mask, tubing) \$ 5, Additional drinks and Personal expenses.

